

The ScaleReady Proven Process

Our Partnership with T & NK Cell Therapy Programs

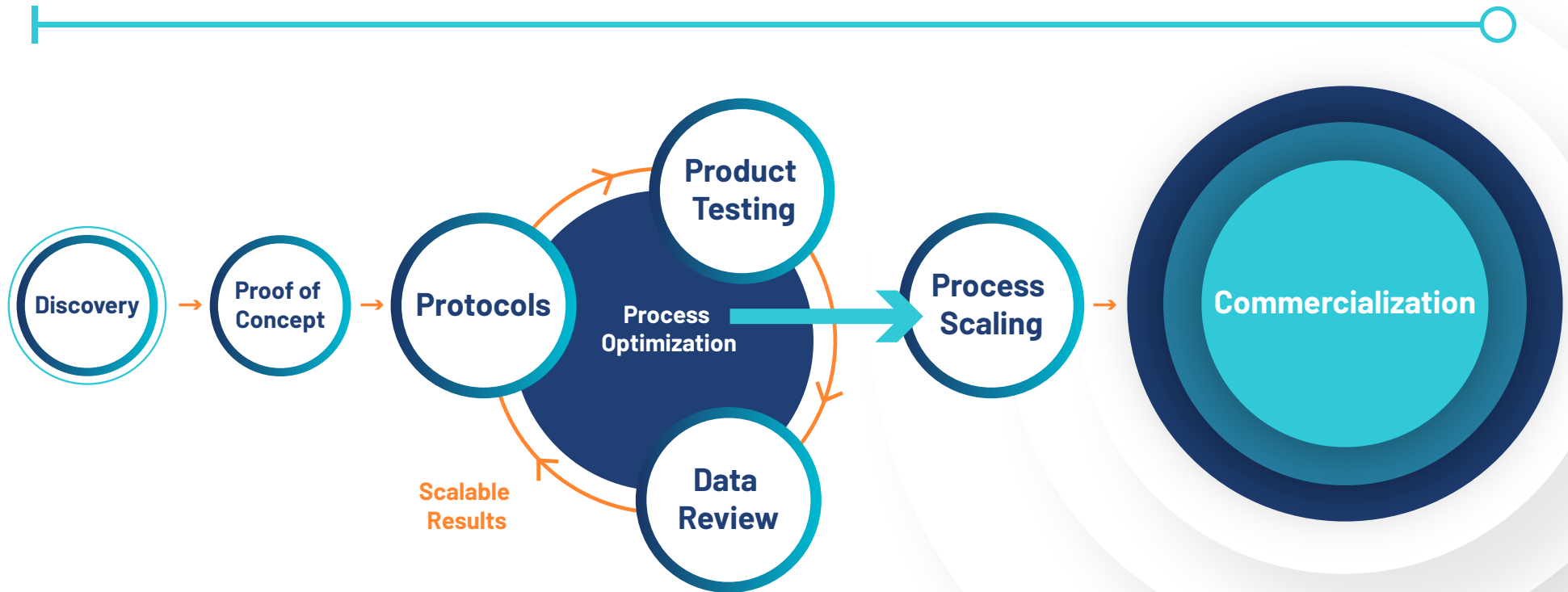
Simplify

Streamline

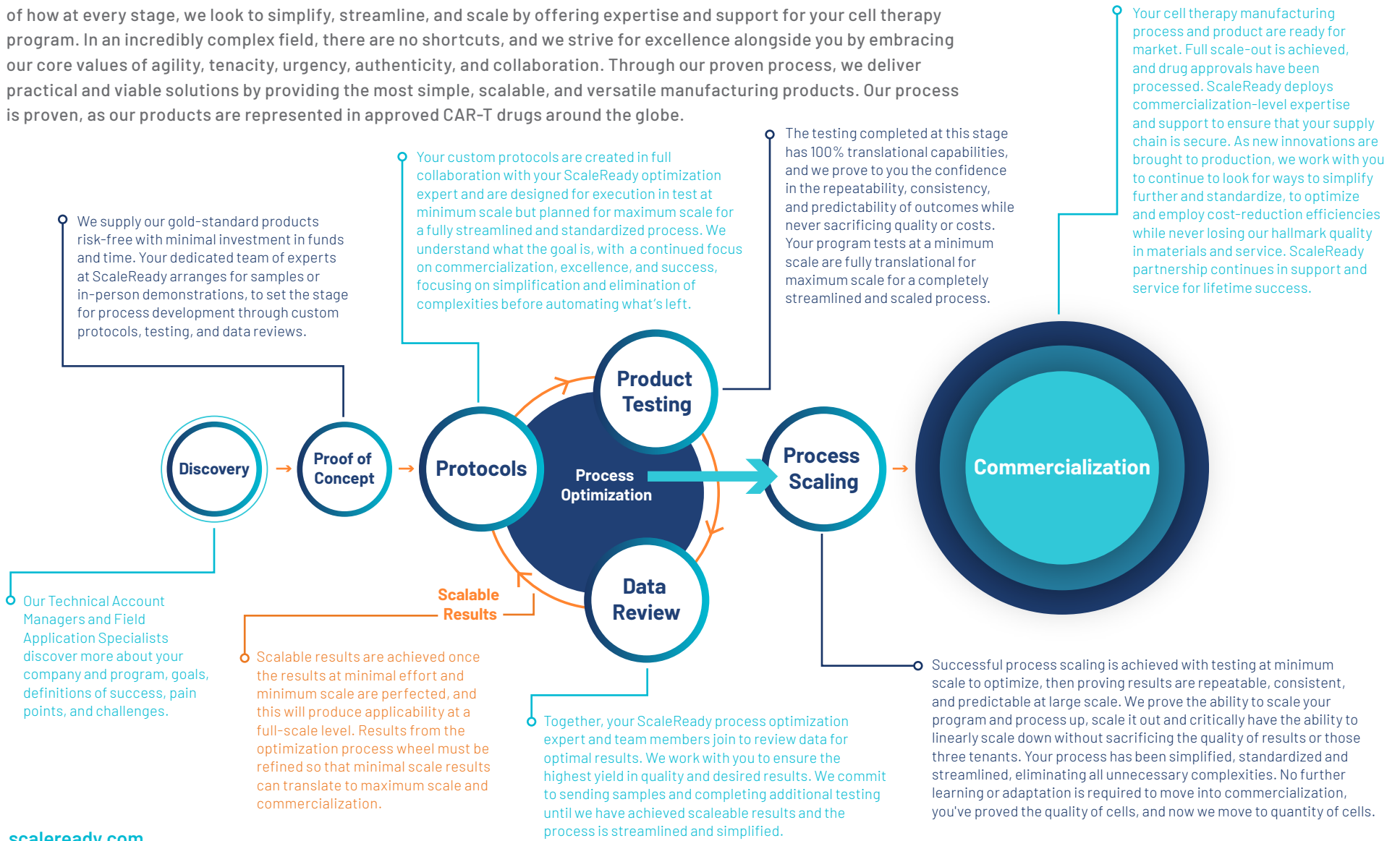
Scale

Support

Optimization Expertise In Cell Therapy Manufacturing



This is our proven process illustrating how ScaleReady works in a true partnership with your T and NK cell therapy program to enable the successful commercialization of your drug. This is a linear left-to-right, as well as a holistic view, of how at every stage, we look to simplify, streamline, and scale by offering expertise and support for your cell therapy program. In an incredibly complex field, there are no shortcuts, and we strive for excellence alongside you by embracing our core values of agility, tenacity, urgency, authenticity, and collaboration. Through our proven process, we deliver practical and viable solutions by providing the most simple, scalable, and versatile manufacturing products. Our process is proven, as our products are represented in approved CAR-T drugs around the globe.



scaleready.com

Contact us: info@scaleready.com

ScaleReady is a Joint Venture formed by Bio-Techne, Fresenius Kabi, and Wilson Wolf. Combining selected offerings from the three partners, the ScaleReady manufacturing platform combines tools and technologies for cell culture, cell activation and expansion, gene editing, and cell processing.

Cue is manufactured by Fresenius Kabi. Trademarks referred to are property of their respective owners. Copyright © 2023 ScaleReady. All rights reserved.

biotechne®

FRESENIUS
KABI

WILSONWOLF™

ScaleReady